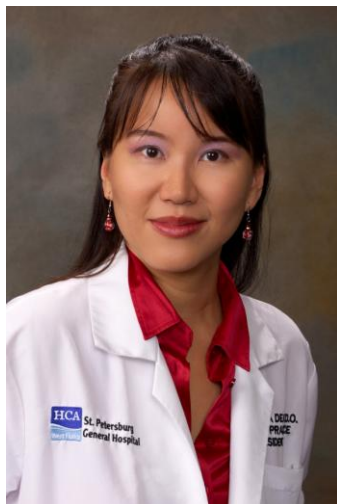


# St. Petersburg General Hospital Family Medicine Residents 2011 - 2012



## Angelina Deak, D.O.

*Family Medicine, PGY – 3*

**Undergraduate:** University of California - Irvine

**Medical School:** Lake Erie College of Osteopathic Medicine, Bradenton – 2009

**Hometown:** Huntington Beach, California

**Email:** angelina.deak@hcahealthcare.com



## Gene DiBetta, D.O.

*Family Medicine, PGY – 3*

**Undergraduate:** University of Florida, University of South Florida

**Medical School:** Lake Erie College of Osteopathic Medicine, Bradenton – 2009

**Hometown:** Tampa, Florida

**Email:** eugene.dibetta@hcahealthcare.com



## Sasha Noe, D.O., Ph.D.

*Chief Resident Family Medicine, PGY –3*

**Undergraduate:** Palm Beach Atlantic University

**Graduate:** University of South Florida College of Medicine – M.S., Ph.D.

**Medical School:** Lake Erie College of Osteopathic Medicine, Bradenton – 2009

**Hometown:** San Fernando, Trinidad and Tobago

**Email:** sasha.noehcahealthcare.com

## St. Petersburg General Hospital Family Medicine Residents 2011 - 2012



### Olga Globosky, D.O.

*Family Medicine, PGY – 3*

**Undergraduate:** University of Pennsylvania

**Medical School:** Lake Erie College of Osteopathic Medicine, Erie, PA – 2009

**Hometown:** Ekaterinburg, Russia

**Email:** [olga.globosky@hcahealthcare.com](mailto:olga.globosky@hcahealthcare.com)



### Enrique Urrutia, D.O.

*Family Medicine, PGY – 3*

**Undergraduate:** University of Florida

**Medical School:** Lake Erie College of Osteopathic Medicine, Bradenton – 2009

**Hometown:** Tampa, Florida

**Email:** [enrique.urrutia@hcahealthcare.com](mailto:enrique.urrutia@hcahealthcare.com)



### Matthew Bowser, D.O.

*Family Medicine, PGY – 2*

**Undergraduate:** University of Toledo

**Medical School:** Lake Erie College of Osteopathic Medicine, Erie, PA – 2010

**Hometown:** Bucyrus, Ohio

**Email:** [matthew.bowser@hcahealthcare.com](mailto:matthew.bowser@hcahealthcare.com)

## St. Petersburg General Hospital Family Medicine Residents 2011 - 2012



### David Doeringer, D.O.

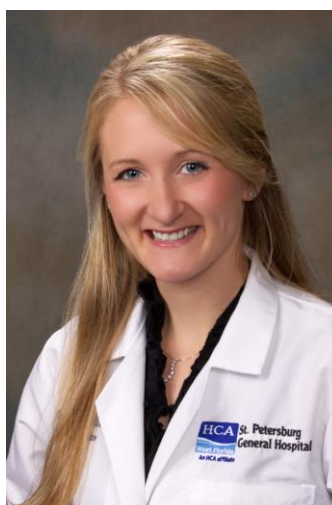
*Family Medicine, PGY – 2*

**Undergraduate:** University of Miami

**Medical School:** Lake Erie College of Osteopathic Medicine, Bradenton – 2010

**Hometown:** Naples, Florida

**Email:** david.doeringer@hcahealthcare.com



### Emily Essert, D.O.

*Family Medicine, PGY – 2*

**Undergraduate:** Stetson University

**Medical School:** Lake Erie College of Osteopathic Medicine, Bradenton – 2010

**Hometown:** Naples, Florida

**Email:** emily.essert@hcahealthcare.com



### Kera Hagan, D.O.

*Family Medicine, PGY – 2*

**Undergraduate:** Lehigh University

**Medical School:** Western University of Health Sciences /College of Osteopathic Medicine of the Pacific - 2010

**Hometown:** San Diego, CA

**Email:** kera.hagan@hcahealthcare.com

## St. Petersburg General Hospital Family Medicine Residents 2011 - 2012



### Katherine Matlock, D.O.

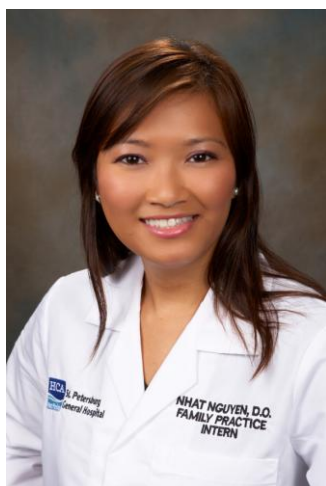
*Family Medicine, PGY – 2*

**Undergraduate:** Michigan Technological University

**Medical School:** Lake Erie College of Osteopathic Medicine, Erie, PA – 2010

**Hometown:** Flint, Michigan

**Email:** katherine.matlock@hcahealthcare.com



### Nhat Nguyen, D.O.

*Family Medicine, PGY – 2*

**Undergraduate:** Rockhurst University

**Medical School:** Kansas City University of Medicine and Biosciences - 2010

**Hometown:** Kansas City, Missouri

**Email:** nhatnguyen.nguyen@hcahealthcare.com



### Jenisa Oberbeck, D.O.

*Family Medicine, PGY – 2*

**Undergraduate:** Westminster College

**Medical School:** Nova Southeastern University – 2010

**Hometown:** West Valley, Utah

**Email:** jenisa.oberbeck@hcahealthcare.com

## St. Petersburg General Hospital Family Medicine Residents 2011 - 2012



### Alison Petras, D.O.

*Family Medicine, PGY – 2*

**Undergraduate:** Xavier University, Cincinnati

**Medical School:** Lake Erie College of Osteopathic Medicine, Bradenton – 2009

**Hometown:** Cleveland, Ohio

**Email:** [alison.petras@hcahealthcare.com](mailto:alison.petras@hcahealthcare.com)



### Levi Rizk, D.O.

*Family Medicine, PGY – 2*

**Undergraduate:** University of California, San Diego

**Medical School:** Touro University College of Osteopathic Medicine, Henderson, Nevada - 2010

**Hometown:** Henderson, Nevada

**Email:** [levi.rizk@hcahealthcare.com](mailto:levi.rizk@hcahealthcare.com)



### Ehren Carine D.O.

*Family Medicine, PGY – 1*

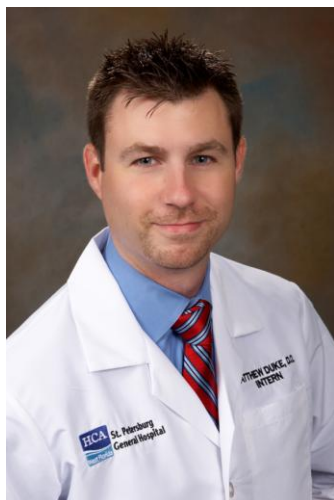
**Undergraduate:** Drexel University

**Medical School:** University of New England College of Osteopathic Medicine, Biddeford, ME - 2011

**Hometown:** Reading, Pennsylvania

**Email:** [ehren.carine@hcahealthcare.com](mailto:ehren.carine@hcahealthcare.com)

## St. Petersburg General Hospital Family Medicine Residents 2011 - 2012



### Matthew Duke, D.O.

*Family Medicine, PGY – 1*

**Undergraduate:** University of Mississippi

**Medical School:** Nova Southeastern University - 2010

**Hometown:** Amory, MS

**Email:** matthew.duke@hcahealthcare.com



### Erica Horstman, D.O.

*Family Medicine, PGY – 1*

**Undergraduate:** University of Central Florida

**Medical School:** Philadelphia College of Osteopathic Medicine, Georgia Campus - 2010

**Hometown:** Celebration, Florida

**Email:** erica.horstman@hcahealthcare.com



### Karin Wakas Stottman, D.O.

*Family Medicine, PGY – 1*

**Undergraduate:** Rollins College

**Medical School:** Lake Erie College of Osteopathic Medicine, Bradenton – 2011

**Hometown:** Winter Springs, Florida

**Email:** karin.stottman@hcahealthcare.com